

when you ain't got the dough.

make your own

Some of the trendy jewelry right now is great — but we all know when something's new and hot, it's also really freaking expensive. One of the new "it" jewelry pieces is the bib necklace, a beautiful cluster of flower, buttons, beads and ribbon that is a true statement piece. Sure, you could go out to the mall and pick one up. But why not make your own? Here's how.

TOOLS & STUFF

These are the things you will need to create this necklace. Fabric can be found cheaply and if used correctly, can make a high quality necklace for a fraction of the store price.

Cotton fabric — any color/pattern you choose

Felt in coordinating color to your fabric

Beads or buttons

Ribbon

Hot glue gun and glue sticks

Scissors

Needles — different sizes depending on what size beads you choose

Thread to match your fabric

Bib necklace pattern (included here)

STEP ONE:

Using the pattern as a guide, cut out a piece of cotton fabric and felt. Set those pieces aside. Then begin cutting your five squares of fabric in different sizes. They don't have to be perfect — just a general square will do. These will eventually become the flowers for your necklace.

TIP

Don't worry too much about cutting the edges exactly right, because they will get sewn up in the end.



STEP TWO:

To create the flowers, weave your needle and thread around the edges of the square, then pull tight to bring the ends together. Run a bit of thread through the back of the flower to make sure it's all connected. Repeat this for each flower. Set aside.



STEP FOUR:

Now it's time to begin assembling your necklace. Arrange the flowers on the base how you would like them. You can pin them in place or just sew as you go. As you are adding the flowers to the base, begin sewing on beads or buttons to the middle of the flowers. Sew them straight through the base, which will give you added support and keep those flowers sewed tight. Repeat this step until all the flowers are in place.

STEP THREE:

To create the base for the necklace, align the two cotton pieces and pin together. Sew along the edges either with a machine or by hand, leaving a corner open. Turn the necklace inside out and sew up the last opening. The felt will be added at the end.



TIP

If you wear all your hair to one side sometimes, place the flowers on the opposite side of your necklace so your hair won't hide them.

STEP FIVE:

After the flowers are finished, add the ribbon for tying the necklace on. Make sure the ribbon is long enough, and it is sometimes a good idea to make it longer than that so it can be tied at different lengths. Sew the ends of the ribbon to the back corners of the necklace base. The flowers on the front should hide any thread when sewing on the ribbon. If your arrangement of the flowers doesn't hide the thread, you can also hotglue the ribbon to the back of the base.



STEP SIX:

To finish up your necklace, simply hotglue the felt to the back. You may need to trim the felt down a centimeter or two to make sure it doesn't show past the sides. The felt will give the necklace more structure and hide all those threads.



TIP

Have fun with the colors you choose. Try unusual combinations for interesting, one-of-a-kind pieces.

STEP SEVEN:

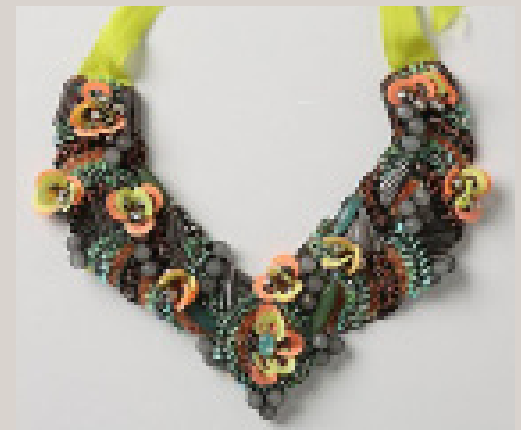
Wear it! Pair this piece with anything from a cocktail dress to a white t-shirt. Add some jazz to any outfit.

OTHER OPTIONS

Here are some bib necklaces available now. Compare yours to these in-store items.



express \$39.50



anthropologie \$128



anthropologie \$228



Bib Necklace Pattern
Simply cut along the lines of this template and pin to your fabric to use it as a guide for cutting.

